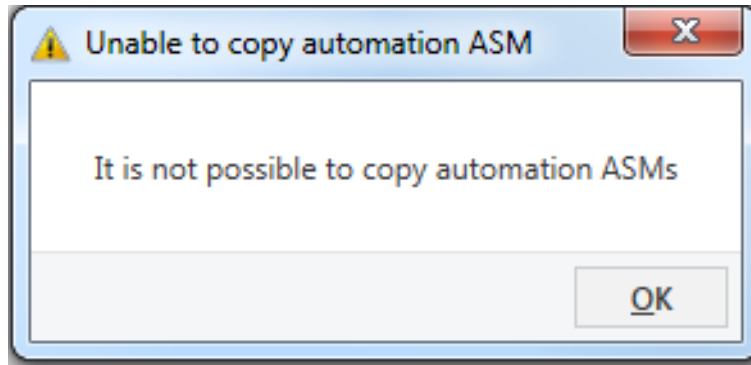


# Heating, Ventilation and Air Conditioning

## AC/S 1.x.1: Is it also possible to copy "Automation ASM's" within the DCA?

No, it is not possible. Due to the structure of this ASM, it is not possible to duplicate and paste the data. Even if it's an empty ASM.

The following note appears:



Unique solution ID: #1677

Author: BA Engineering Team

Last update: 2019-04-03 13:39